

Nordic Warmth, Universal *Safety*

Aduro Bio Fireplaces



Created with passion in Denmark



Real Fire. True *Comfort*

Invite warmth into your home with Aduro Bio Fireplaces. Simple. Timeless. Safe.

- Works in any room, inside or out
- No chimney or electricity required
- Safe refilling and operation with Aduro Bio-Safe
- Pleasant warmth up to 1.8 - 3 kW
- Timeless Danish design

Embrace *coziness* anywhere in your home.
The B1 Bio Fireplace, with glass sides, creates warm
ambiance from every angle.



B1. Bio Fireplace - Wall Bracket

Real fire without the *worries*

Your safety is our top priority. Designed for easy refilling and safe ignition, our patent-pending Aduro Bio-Safe system prevents refueling when the fireplace is hot. When the fireplace is about 40°C, a heat sensitive spring blocks the funnel from being attached. The fireplace's burner is equipped with ceramic fibers that absorb bioethanol like a sponge, making it easy and safe to ignite.

With the included funnel, made from recycled plastic, refueling is simple.

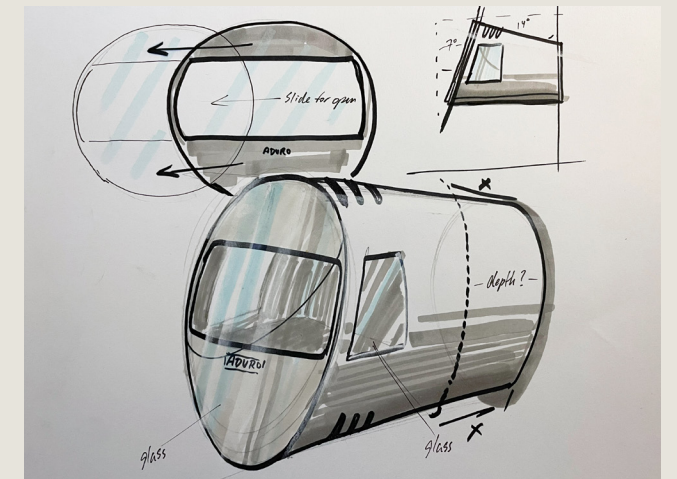


Aduro Bio Fireplaces have undergone extensive safety testing and are certified according to the European standard EN16647:2015

Meet the designer. *Casper Storm*



B1. Bio Fireplace - Oak Wood Legs



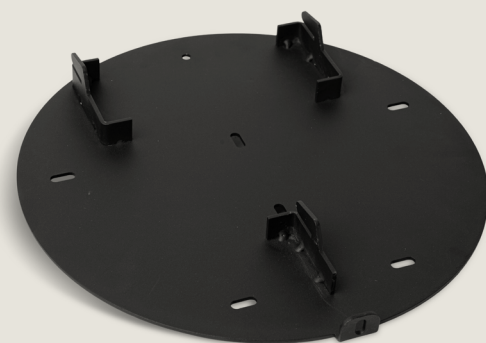
Aduro's Bio Fireplaces were designed in collaboration with industrial designer *Casper Storm*. For 20 years, Storm's Nordic sensibility has helped Aduro bring simplicity into focus. Effortlessly marrying form and function, Storm's designs bring elegance and ease to every home's fireplace.

Embrace the heat of real fire

Bring the *coziness* outside.
The B2 Bio Fireplace features an open front
for warmth you can really feel.



Oak Wood Legs



Wall Bracket



Metal Foot

Make it *yours*

Marrying elegant simplicity with customisable accessories, our Bio Fireplaces fit effortlessly into any space and compliment your personal style. With two fireplace models and three mounting options, make your Bio Fireplace uniquely yours.

[Read more on adurofire.com](http://adurofire.com)

B1. Bio Fireplace

B2. Bio Fireplace



B2. Bio Fireplace - Oak Wood Legs



B1. Bio Fireplace - Wall Bracket

Specifications

For the B1 & B2 Bio Fireplace

Measurements (Ø x H x D)	48 x 47.65 x 35.05 cm
Weight, fireplace	26 kg / 24.5 kg (B2)
Distance to combustible material behind	2 cm (does not apply to wall-mounting)
Distance to combustible material to the side	15 cm
Distance to combustible material above	60 cm
Distance to combustible material in front	75 cm
Wall bracket	If the fireplace is to be mounted on the wall, it must be installed on a non-flammable wall.
Material, fireplace and burner	Black powder-coated steel / 4 mm ceramic glass (B1) / Brushed stainless steel
Material, funnel	Recycled plastic from Danish households
Capacity, burner	1.2 L (we recommend 1 L)
Heat efficiency	1.8 – 3 kW
Burn time	3 – 4 hours
Minimum room size	80 m ³
Recommended bioethanol	Bioethanol (UN:1170, 93 – 96.5 %)
Tested and certified according to European standard EN16647:2015	

[Read more on adurofire.com](#)

The *colors* of home

Our gallery of spaces imagines our Bio Fireplace in different rooms. No matter the palette of your home, your Bio Fireplace will enhance your personal style.

Share images. Spark inspiration.
Tag us on Instagram to share the warmth.

@aduro_stoves





 **Aduro**[®]
adurofire.com

Aduro A/S
Hasselager Allé 13D
DK-8260 Viby J

We reserve the right for any printing errors and stylistic adjustments of the images used